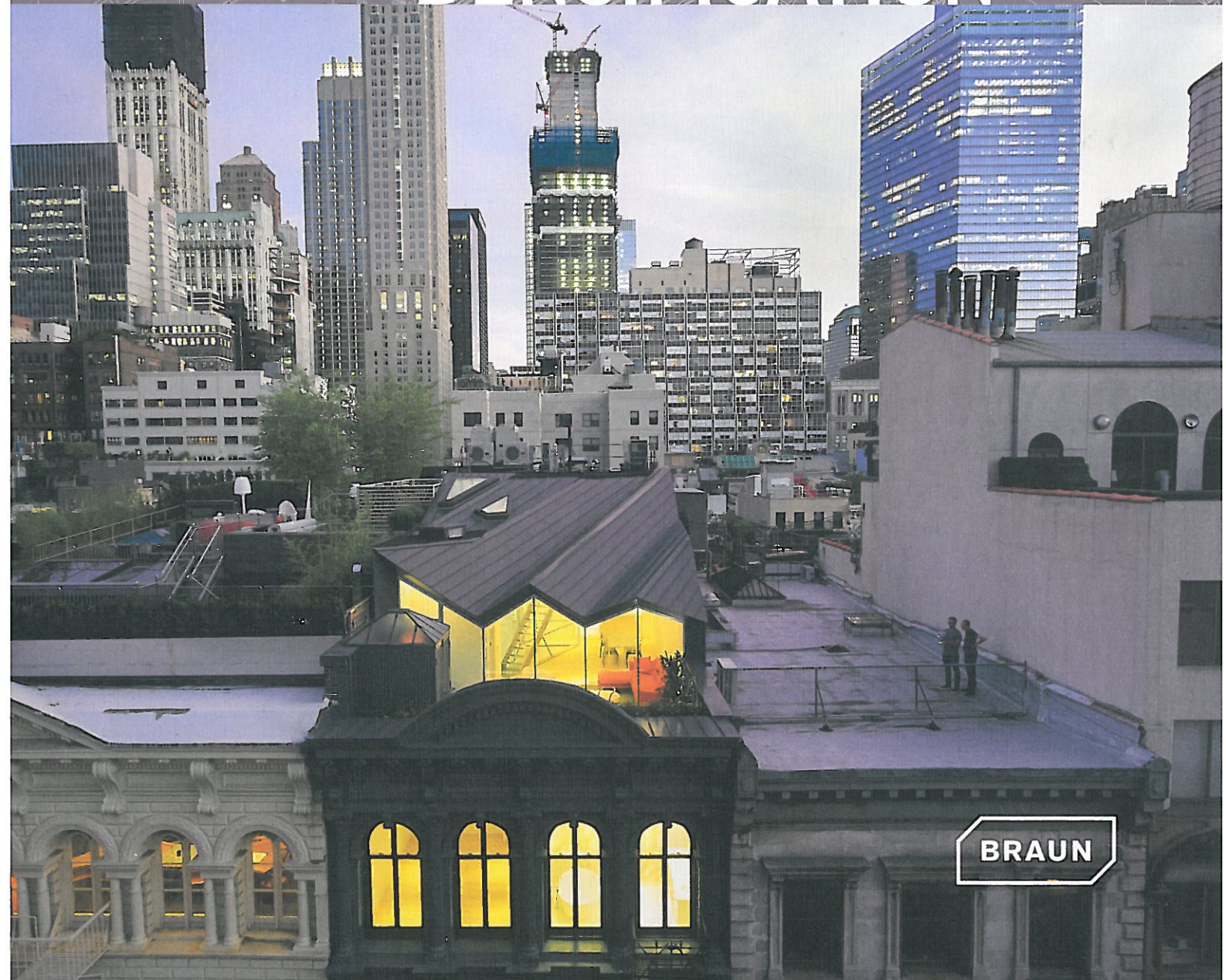


SIBYLLE KRAMER

# DESIGN SOLUTIONS FOR URBAN DENSIFICATION



**BRAUN**







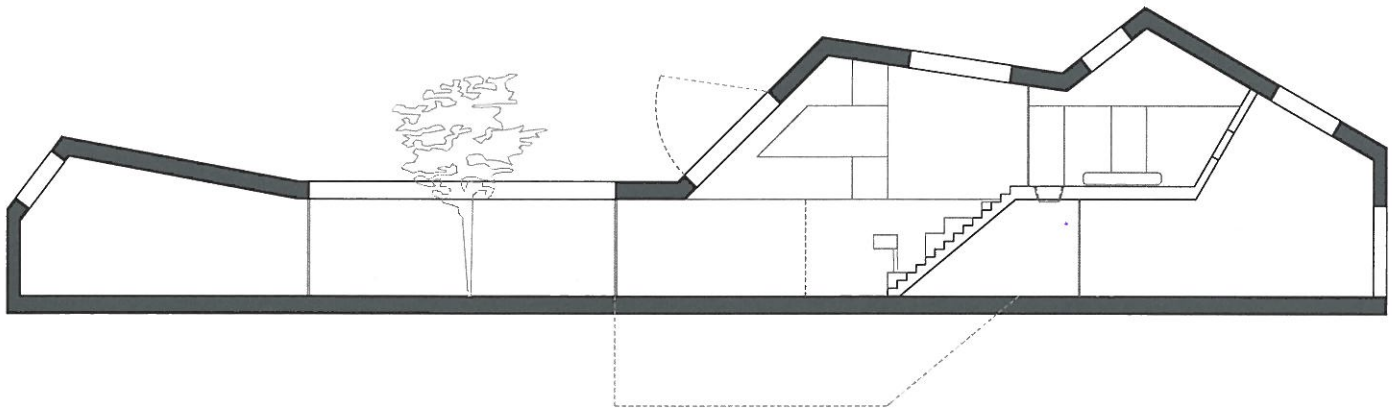
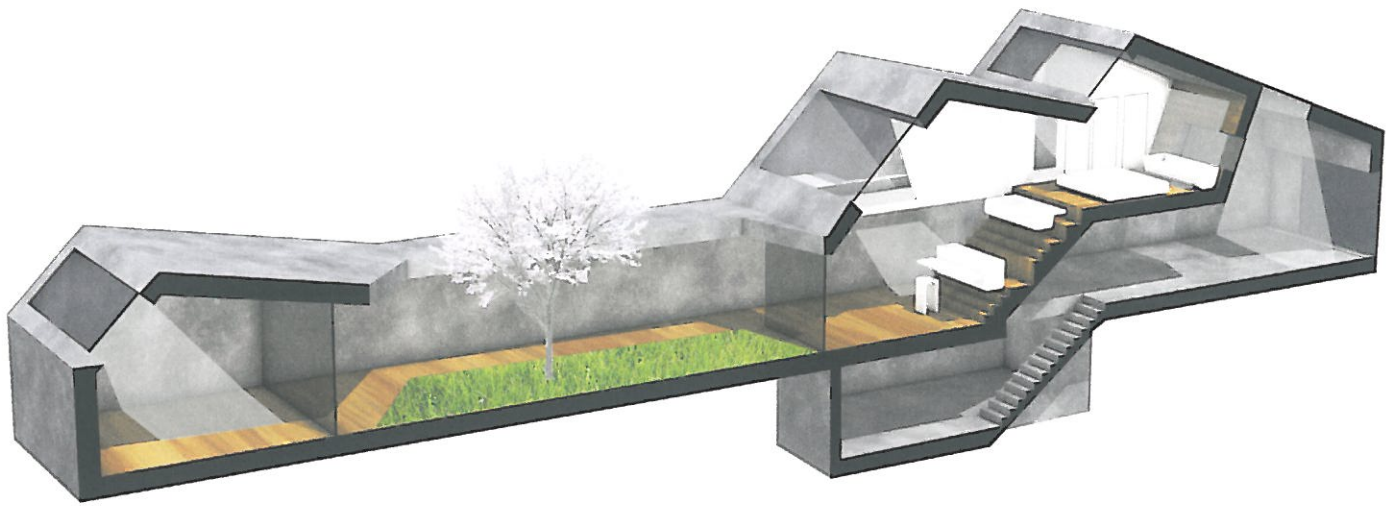
# HOUSE CJ\_5 CAMEL ARCHITEKTEN

**LOCATION:** VIENNA, AUSTRIA | **COMPLETION:** 2014 | **STRUCTURAL ENGINEERING:** WERKRAUM WIEN INGENIEURE | **BUILDING SERVICES:** ENEROP | **PHOTOGRAPHER:** CAMEL / HERTHA HURNAUS



From the outside, one enters into a relatively closed white spatial sculpture, which then gradually opens upwards via the vestibule studio/garage towards the living spaces and atrium garden. Despite the narrowness of the building plot, this generates very generous, interweaved indoor spaces. The exterior white cube continues as an interior white cube containing the studio/garage and the cinema in the basement. Located behind it, in the living/office space the continuous exposed concrete surfaces on the walls and the ceiling as well as continuous timber flooring

aligned with the walls combine the interior and exterior into a continuous space. This space extends across the central kitchen pedestals as part of the stair landscape (cj\_5 = Cooking Jokey, five-meter wide) across the studio to the sleeping quarters on the top floor. The bathroom and toilet are connected to the sides and designed as independent islands of color with very small-format tiles. The "room-in-room system" creates visual interactions among all residential and office areas and to the central outdoor space, the garden atrium.



With the project house cj\_5 Caramel examines the question of sustainable densification of the suburban areas of Vienna. The applicable construction class with permissible building heights between 4.5 and 7.5 meters allows the construction of two-floor single or town house estates. With their connected gardens and terraces at the living room level they offer high individual quality of life on the one hand while on the other they create a very

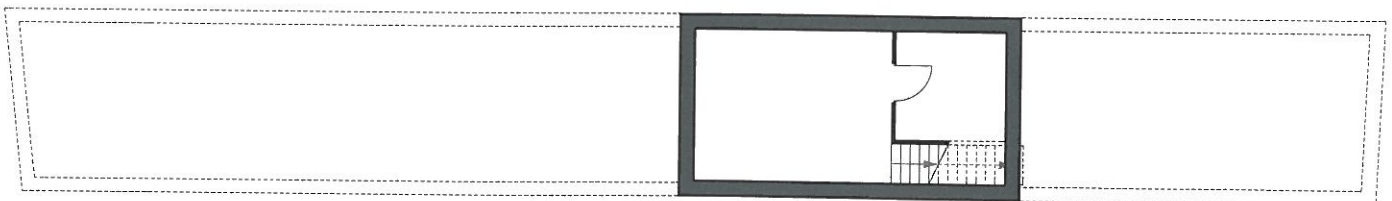
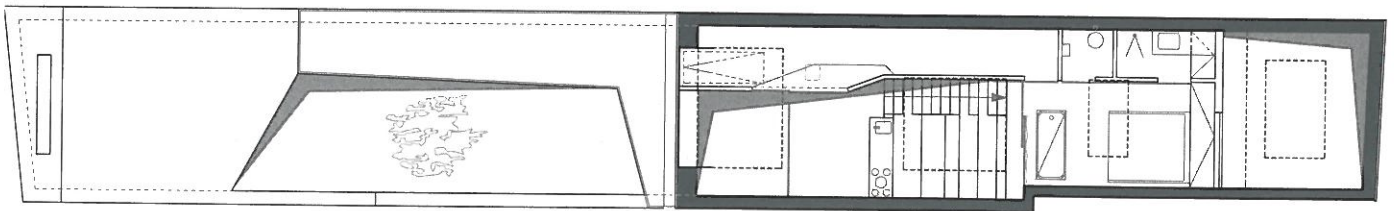
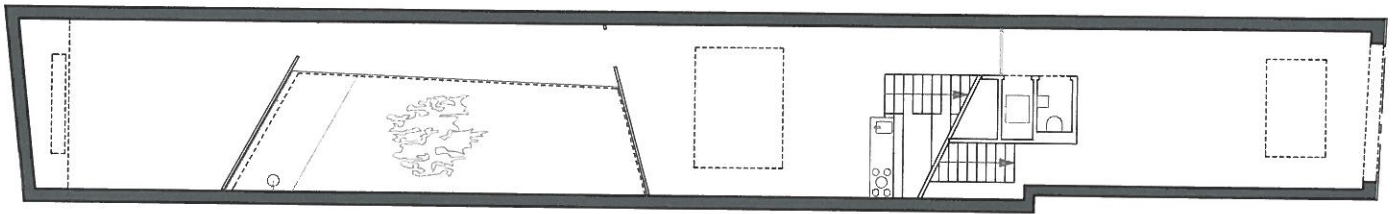
high demand for space due to their low urban density (residential area/plot area) of 0.2 to 0.4. In terms of infrastructure and space utilization, a condensed shallow building method should not only be applied in these areas (UD 0.4 to 0.8) but the aim should rather be an UD value of 0.8 to 1.2, which currently can only be accomplished with multi-story densely constructed apartment blocks.





## FACTS

GROSS FLOOR AREA: 168.42 SQM  
MAIN MATERIALS: REINFORCED  
CONCRETE, FULL THERMAL  
PROTECTION, WHITE POWDER-  
COATED ALUMINUM PANEL  
CLADDING ON THE FRONT FAÇADE  
USE: RESIDENTIAL  
URBAN PLANNING REQUIREMENTS:  
TWO-FLOOR SINGLE OR TOWN  
HOUSE COMPOUND  
INNOVATION: PHOTOVOLTAIC  
FIELDS, AIR TO WATER HEAT PUMP







## PROJECT ELEMENTS

THE PILOT PROJECT HOUSE CJ\_5 BY CAMEL ARCHITEKTEN MAINTAINED THE QUALITIES OF A SINGLE-FAMILY DWELLING WITH A GENEROUS GARDEN AND TERRACE COUPLED WITH AN URBAN DENSITY OF 1.0, COMPAREABLE TO A MULTI-STORY RESIDENTIAL BLOCK WITH SEVERAL UNITS WITHOUT AN OUTDOOR CONNECTION. THIS IS POSSIBLE BY A NARROW GROUND FLOOR PLAN OF 5X35 M WITH FIRE-PROOF WALLS ON THREE SIDES THAT ALLOW DIRECT NEIGHBORING CONSTRUCTION, INTERNAL LINKING OF THE LIVING LEVELS, A CENTRAL ATRIUM GARDEN, AND FOCUSED HORIZONTAL AS WELL AS VERTICAL ILLUMINATION SPACES.









## MILL24 CAMEL ARCHITEKTEN

**LOCATION:** VIENNA, AUSTRIA | **COMPLETION:** 2016 | **STRUCTURAL ENGINEERING:** WERKRAUM WIEN INGENIEURE | **HOME APPLIANCES:** ENEROP | **PHOTOGRAPHER:** CAMEL / HERTHA HURNAUS

The exterior merges with the interior and the idyllic garden space far above the roofs of Vienna can be experienced, accessed and even circled from every room.

The outdoor spaces spread across various levels and cardinal directions, not only creating panoramic views, but also implied tension between the exterior and interior across various floors and climates. The entire living, dining, kitchen and relaxation zone features an open design. Even the sanitary facilities offer

transparent views. At the same time, two bedrooms and a home office offer closed retreat options. The inner city redensification that cannot be seen from the outside.





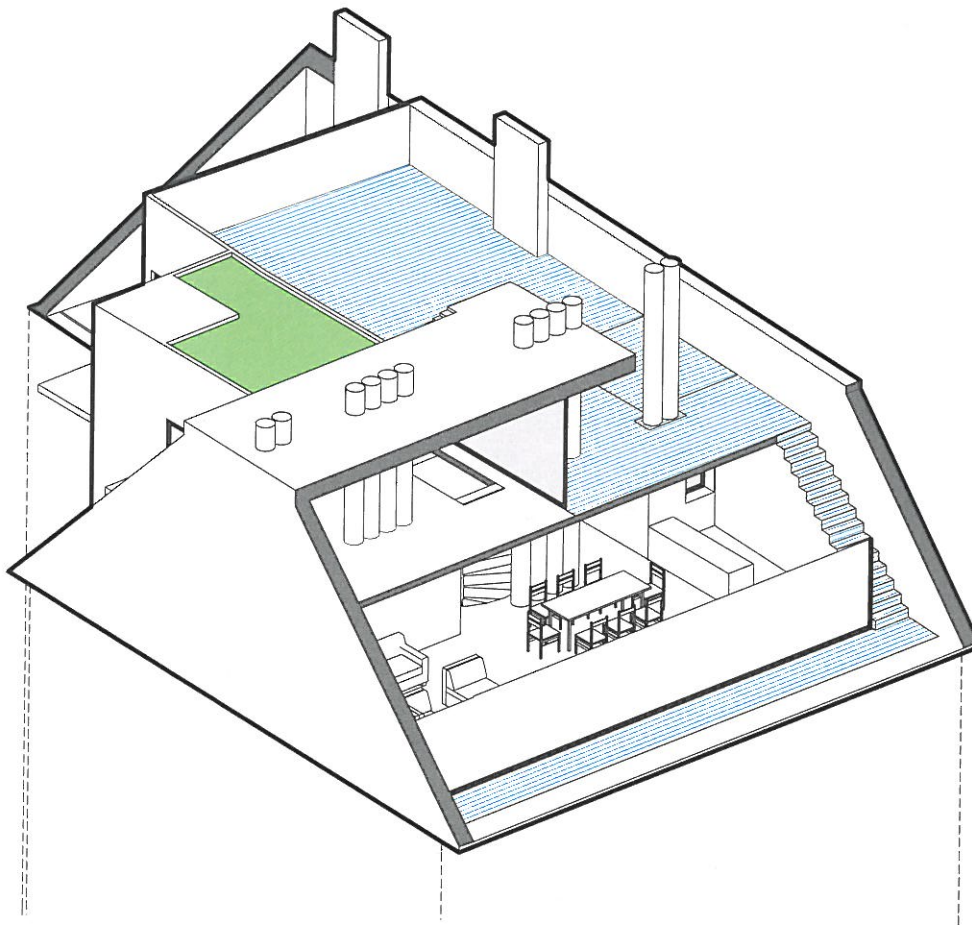
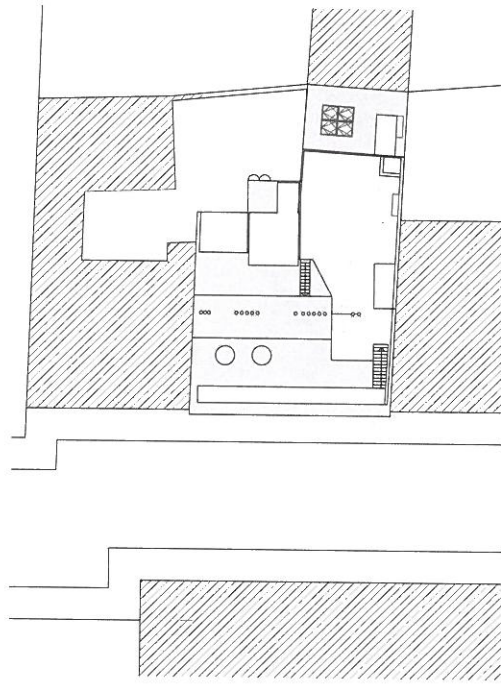


**FACTS**

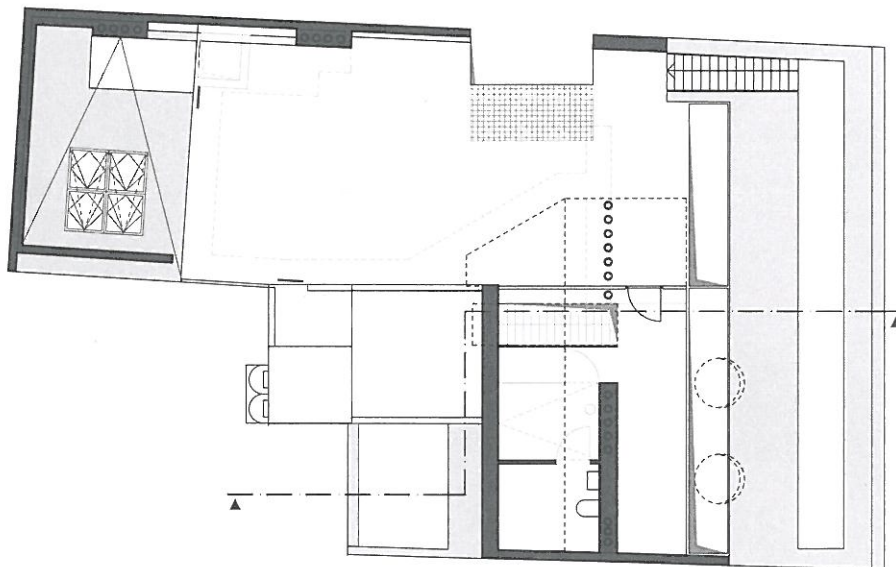
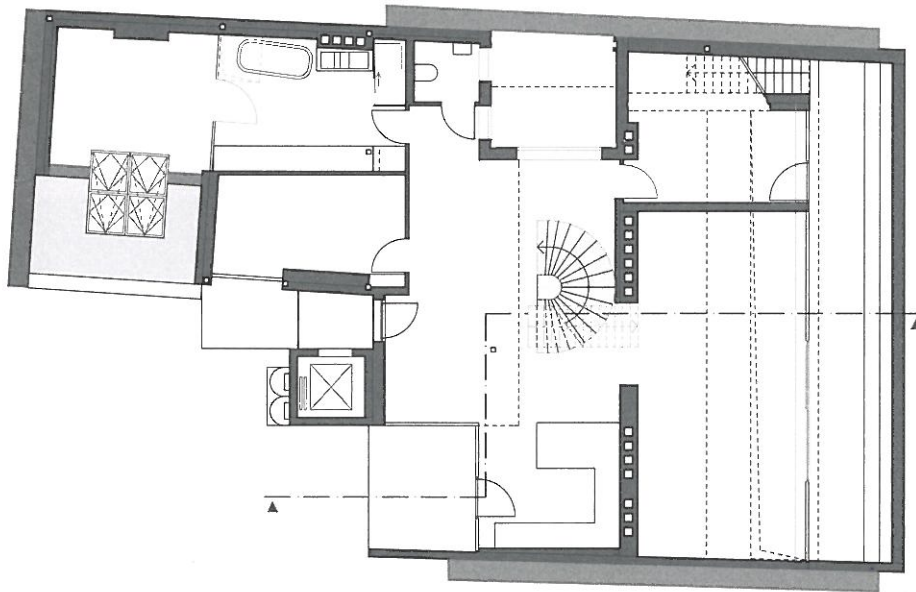
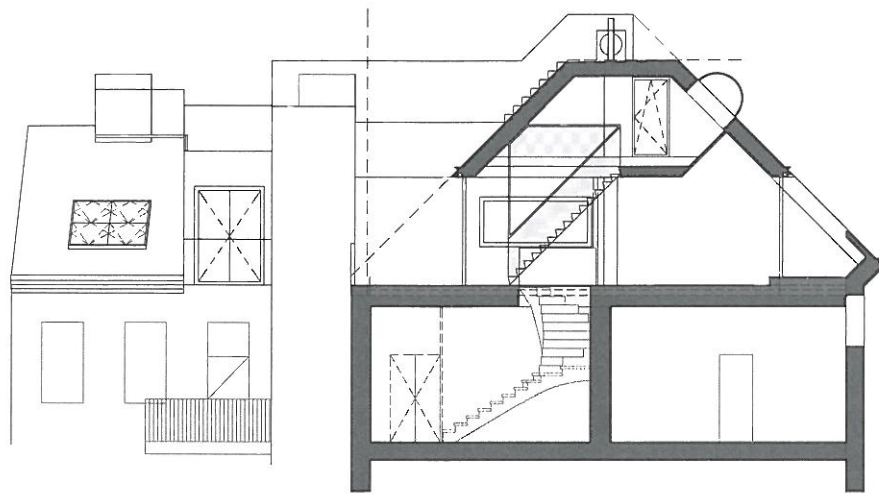
GROSS FLOOR AREA: 172.29 SQM +  
71.96 SQM TERRACE

MAIN MATERIALS: OUTER SHELLS:  
STEEL AND REINFORCED CONCRETE/  
BALUSTRADES: PLASTIC MEMBRANE  
USE: PENTHOUSE

URBAN PLANNING REQUIREMENTS:  
INNER-CITY RECOMPRESSION  
INNOVATION: SYNTHETIC COATING









## INVISIBLE FROM THE STREET

THE INNER CITY REDENSIFICATION OF MILL24, THE LATEST PROJECT OF CAMEL ARCHITEKTEN, CONSISTING OF THE ROOF CONVERSION OF A WILHELMINIAN-ERA BUILDING IS ALMOST INVISIBLE FROM THE STREET DUE TO ITS SPECIFIC COMPOSITION AND OFFERS FREE SPACES ON THREE DIFFERENT LEVELS.





